

Software **Advance Steel**

Question **How is the drawing page header content updated after the Project information has changed?**

Module **Detailing**

Version **Advance Steel 2010**

Difficulty *****

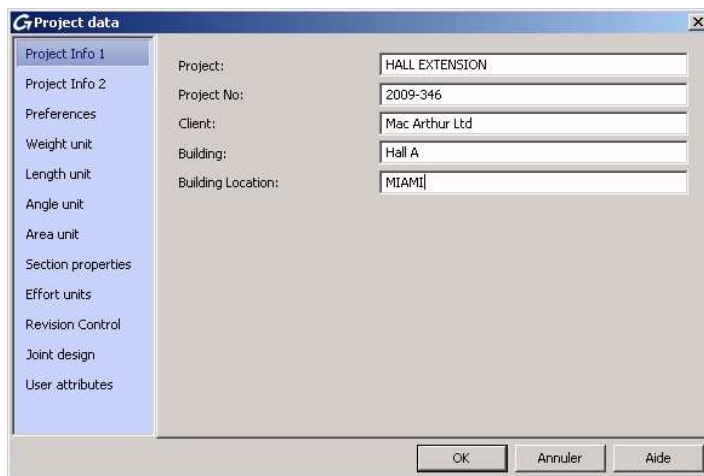
Answer

When you create a drawing, you may get a drawing page header like the following:

	SINGLE PART DRAWING			
	Project :		Pos Num : 1	Scale : <i>1:10</i>
	N° :			Detailer :
	Date : <i>13/11/2009</i>	Client :	Material : S235JR	Revision Date Index


Close your drawing and go to the 3D model.

Click the “Definition of the project data, units and preferences” icon on the Advance Steel “Standard” toolbar. Then enter your data in the dialog box and click OK.



Click the “Update page header” icon on the Advance Steel “Numbering, drawing” toolbar.

All the drawings created from this model will have their page header updated with the info entered in the “Project data” dialog box.

	SINGLE PART DRAWING			
	Project : <i>HALL EXTENSION</i>		Pos Num : 1	Scale : <i>1:10</i>
	N° : <i>2009-346</i>			Detailer :
	Date : <i>13/11/2009</i>	Client : <i>Mac Arthur Ltd</i>	Material : S235JR	Revision Date Index