



# Audi's New Production Hall N24

Ingolstadt - Germany



## The Project

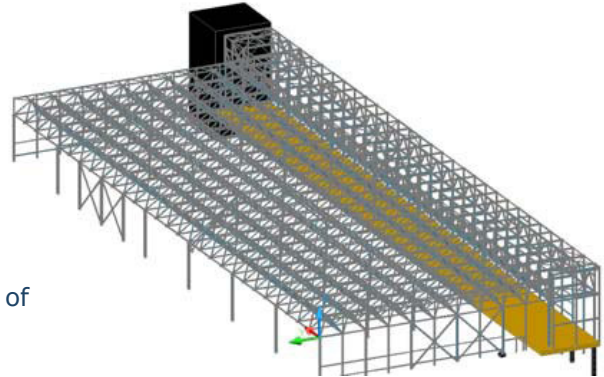
Audi's new 'Production-hall N24' was the first project Stahlbau Wegscheid GmbH has done with Advance STEEL. The production hall has a three-dimensional roof structure made from single bars and joints. A room for technical activities, which was built next to this construction was created with trusses

## Project Challenges:

- Change from "SDDP" to Advance Steel
- The ability to work with an unlimited number of parts

## Software Solution - Advance Steel

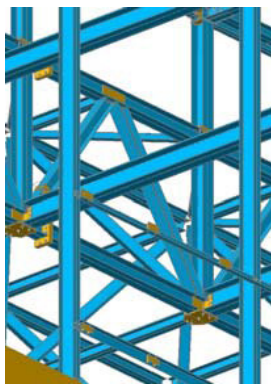
- Excellent 3D-modelling and automatic updates of manual changes in all technical documents.



## Questions for Andreas Obermaier, EDV-Manager of Stahlbau Wegscheid

### Mr. Obermaier, would you give us some information about this project?

The production hall was constructed as a three-dimensional roof structure with single bars and joints. The structure weighs approximately 550 tons over a 5750 square meter area with a height of 20 meters. A room for technical activities, which was built next to this construction, was created with trusses.



### How did Advance Steel help you manage the project?

The project was very complex and therefore we needed software that was able to work with an unlimited number of parts. Altogether 2280 single bars with 570 joints (connecting up to 12 elements) were used. Advance Steel's ability to create coloured shades of the 3D-model and to present it in different views while modelling, saved us a lot of time and energy.

### Why did you decide on Advance Steel?

The direct integration into the production process using an NC-interface and the low error rate due to the collision control enabled faster and more precise work. The excellent 3D-modelling, the automatic updates of manual changes in all technical documents and last but not least the good price-performance ratio of this software convinced us.

## GRAITEC UK LTD

The Old Forge - South Road  
Weybridge - Surrey - KT13 9DZ

Tel: 01932 858516

mail@graitec.co.uk  
www.graitec.co.uk

Autodesk  
Authorised Developer

