



# Băneasa Business & Technology Park

Băneasa - Romania

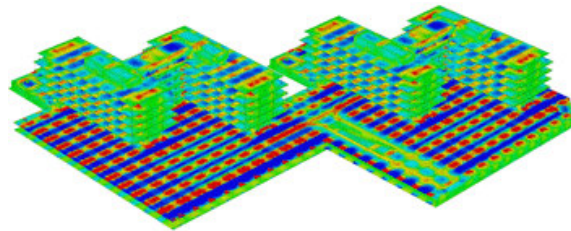
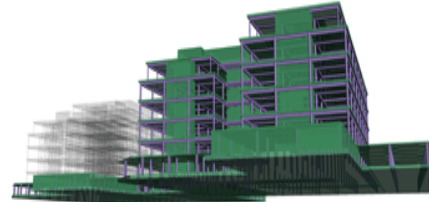


## The Project

Băneasa Business and Technology Park is a business complex covering a total area of more than 160.000m<sup>2</sup>, designed to be headquarters of large companies, business conferences, etc.

Project conditions:

- The building is located in a highly - seismic area
- 2 buildings (4 buildings altogether!) are placed on a common basement that contributes to the global stiffness of the structure. Consequently they were modeled as a single structure.
- The floor above the basement does not have beams. It is created directly on capital-head columns.



## Mrs. Ing. Diana Zagaican, can you please give us a few details about BBTP?

The structure is composed of 2 identical building parts, placed on a common basement for parking. Due to the structure complexity (the basement measures 180 x 20 meters), the input model counts about 1200 planar elements and 2000 linear elements.

## What major issues did you face designing this structure?

The common basement imposed modelling 2 connected buildings as a single structure. Considering the model complexity, we needed a program with a powerful calculation engine on one hand, and advanced modelling and post-processing functionalities on the other.

## And what was the solution to your problem?

As usual, delivery deadlines were tight; I had a very complex project with little time to do it. Using Gritec programs for 4 years and being familiar with their good performance, I accepted a new challenge: to use the new structural analysis software Advance Design for modelling the project. This raised 2 issues: Advance Design was a new tool (I was using Effel) and the project deadline. The Gritec team assisted me during the entire project and thus I was able to deliver in a very short time.

### GRAITEC UK LTD

The Old Forge - South Road  
Weybridge - Surrey - KT13 9DZ

Tel: 01932 858516

mail@gratec.co.uk  
www.gratec.co.uk

**Autodesk**  
Authorised Developer

