



Booster Heater 3V-3

Schwedt - Germany



The Project

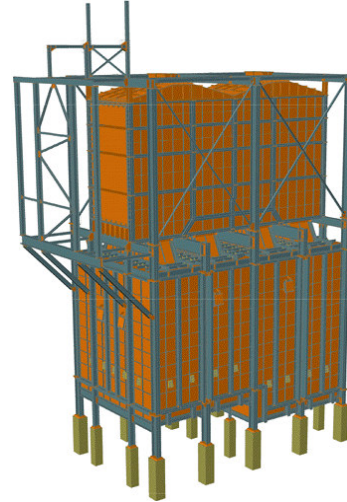
The booster heater has a steel structure split into two sections – convection and radiation – built with beams and welded prefabricated panels.

Project Challenges:

- Specific Steel structure for the petrochemical industry
- Special connections
- Specific drawing presentations needed

Software Solution - Advance Steel

- Specific connections were developed
- Specific 'Drawing Styles' were configured to get automatic output.



Questions for Arch V. Croitoru, Project Manger at Heurtey Petrochem Romania

Can you tell us a few words about the Heurtey Petrochem group?

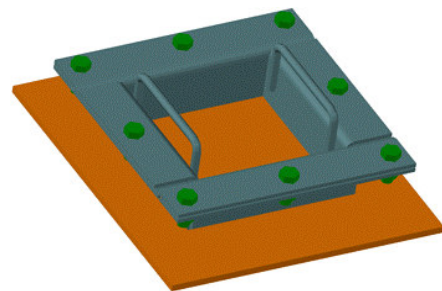
Founded in 1953, Heurtey Petrochem is specialised in design and fabrication of tubular process fired heaters dedicated to the hydrocarbon industries. The Romanian branch was founded in 2000 and we are working in an international environment for worldwide projects.

So, what is your general feeling about Advance Steel?

I must admit that I was impressed with the software versatility and the flexibility for designing structures for the hydrocarbon industry.

What was GRAITEC's role in adapting Advance Steel to your company needs?

Advance Steel has the ability to add custom connections. GRAITEC developed several custom connections specifically for our company: highly customisable "doors" type joints (various hinges, handles and tubes made up of folded plates and curved beams). Using these connections we reduced the time we spent in designing structures and we obtained a quick return on investment. Also, in order to improve cooperation between our departments and subsidiaries, GRAITEC finalised the import/export to Staad – structural design software. Following our requests, GRAITEC added all profiles and drawing styles necessary to our particular field.



GRAITEC UK LTD

The Old Forge - South Road
Weybridge – Surrey - KT13 9DZ

Tel: 01932 858516

mail@graitec.co.uk
www.graitec.co.uk

Autodesk
Authorised Developer

