



Duisburg Casino Canopy

Germany



The Project

The canopy at the main entrance of the casino in Duisburg was designed by Innovations-Verbund-Systeme GmbH & Co. KG. The canopy weighs 50 tonnes and is fixed to the curved walls of the building at a height of 10 metres. The span at the entrance wall is much smaller which makes it look like a funnel.

Project Challenges:

- Funnel-shaped canopy
- Modelling of specific profiles
- Symmetrical modification in flange shape

Software Solution - Advance Steel

- User Friendly software
- Generation of custom profiles, etc



Questions for (Dipl-Ing) Peter Mertens structural engineer – construction at Innovations-Verbund-Systeme GmbH & Co.KG

Can you please give us some information about the project?

"The canopy is located over the main entrance of the casino. The approximately 50 tons heavy steel construction is fixed to the building at a height of 10 meters. Since the walls of the building are curved, the canopy looks like a funnel."

Why did you decide on Advance Steel?

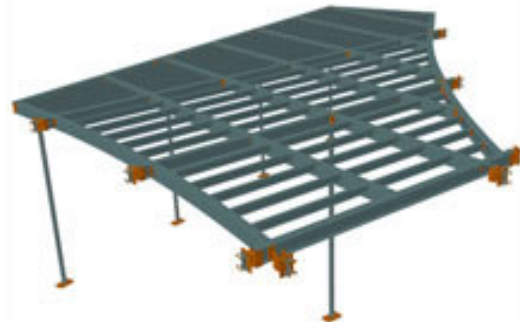
"We are very satisfied with the ease of use of the Access database of Advance Steel. We were also convinced by the excellent customer support, the easy operation of the software and last but not least by the good price-performance ratio."

"The canopy of the casino in Duisburg is one of 150 projects we have designed with GRAITEC Advance Steel."

What was the biggest challenge of this project?

One of the main tasks was the modeling of 'user-specific profiles' because of the very specific customer requirements.

"Due to the requirement of the special section we had to modify normal profiles symmetrically in flange shape. Therefore the generation of custom profiles was very important. When all these demands were achieved, Advance Steel proved to be excellent software."



GRAITEC UK LTD

The Old Forge - South Road
Weybridge - Surrey - KT13 9DZ

Tel: 01932 858516

mail@gratec.co.uk
www.gratec.co.uk

Autodesk
Authorised Developer

