



# SCCV Nathalie

Le Havre - France

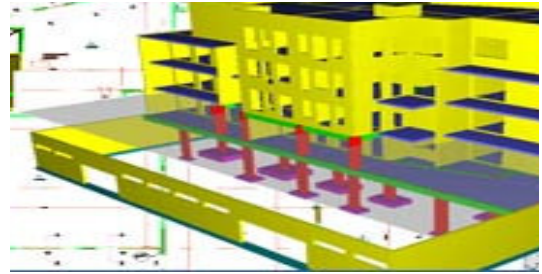


## The Project

28 residences. R+3 with a basement 2100 m<sup>2</sup>. Half-buried basement, flat roof, and superficial foundations.

## Project Challenges

- Construction floor: the front and the walls, the interior walls do not lead at all to the basement.
- Retaining wall on the street, created by 2m alternating passes.



## Solution: Advance Concrete

- Modeling of 2100 m<sup>2</sup> in Advance (2 to 3 days)
- Transfer to Arche and model finalization (1 day)
- Optimization and creation of all the reinforcement drawings (7 days)
- Construction drawings creation (drawings and numerous cuts) (7 days)

## M. Bourgeois, can you make a short presentation of the FINAXIOME group?

The group was founded in 2003. We are specialised in selling tax-free real estate products. Land, architectural designs, structural studies, implementation papers, work monitoring, prospecting, sales, insurance, locative trust. Finaxiome manages the global project from A to Z and the growth of the group is considerable (2000 residences sold at the end of 2005 with a growth of more than 50%). Today, the entire enterprise is searching to increase its productivity, in order to answer the requests.

## What were your decision criteria for the purchase of Advance?

We were searching for a coherent, efficient and easy to use CAD / Calculation chain. Main objective: avoid data re-entering and errors.

## What can you tell us about SCCV Nathalie?

The structure modeling with Advance took us about 2 -3 days. Afterwards we worked with the model in Arche and in 1 day we were able to obtain the first load distribution. Then the structure optimisation and the construction drawing creation (reinforcement on Arche/Advance and formwork + cuts on Advance) took us two weeks. The project was globally finished within 4 weeks.

## The courses result?

We have two Advance licenses and we will increase that to 6, plus Arche. The software is really easy to use. The main advantage of Advance is the high productivity. We also gain quality due to 3D.

### GRAITEC UK LTD

The Old Forge - South Road  
Weybridge - Surrey - KT13 9DZ

Tel: 01932 858516

mail@graitec.co.uk  
www.graitec.co.uk

**Autodesk**  
Authorised Developer

